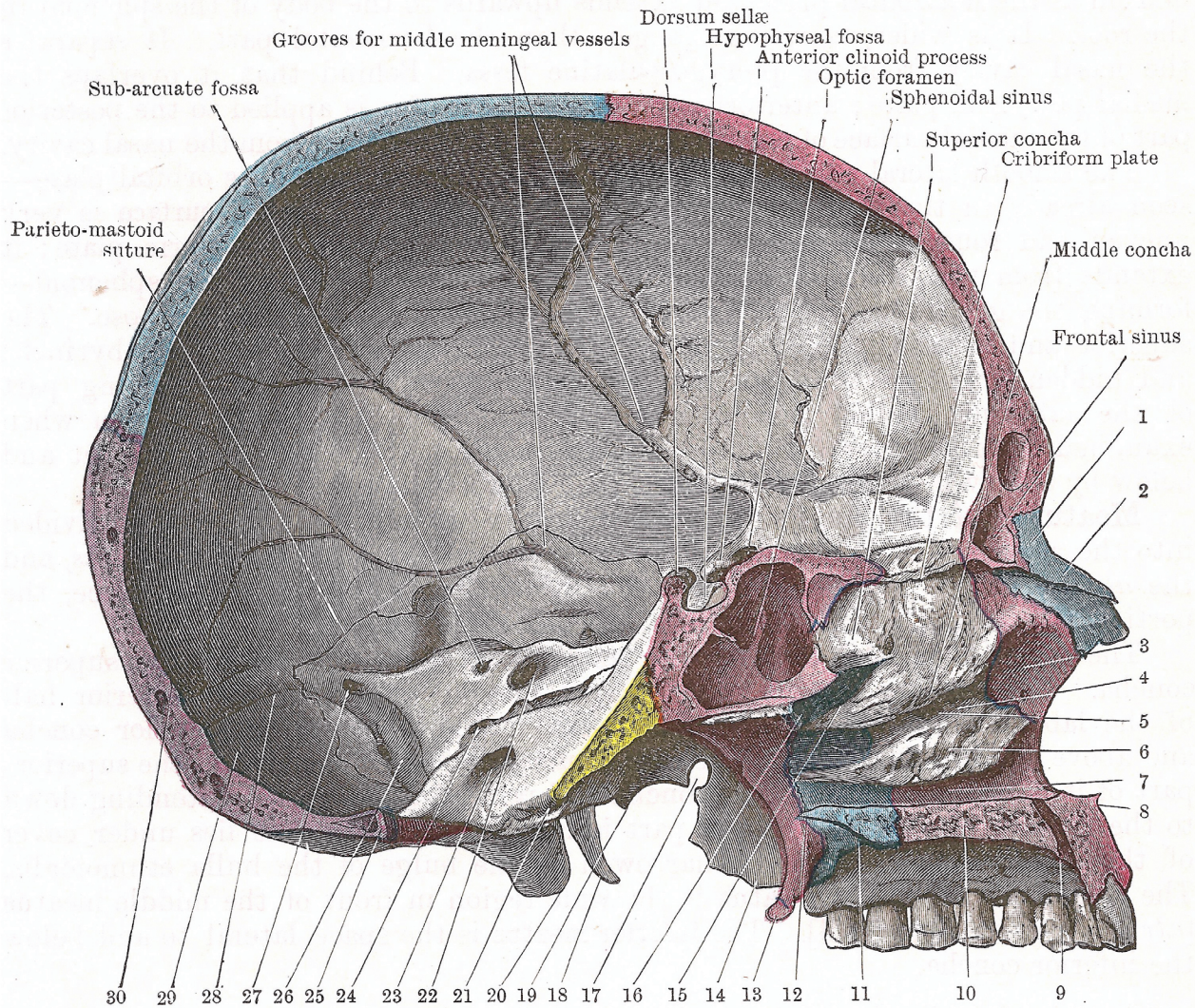


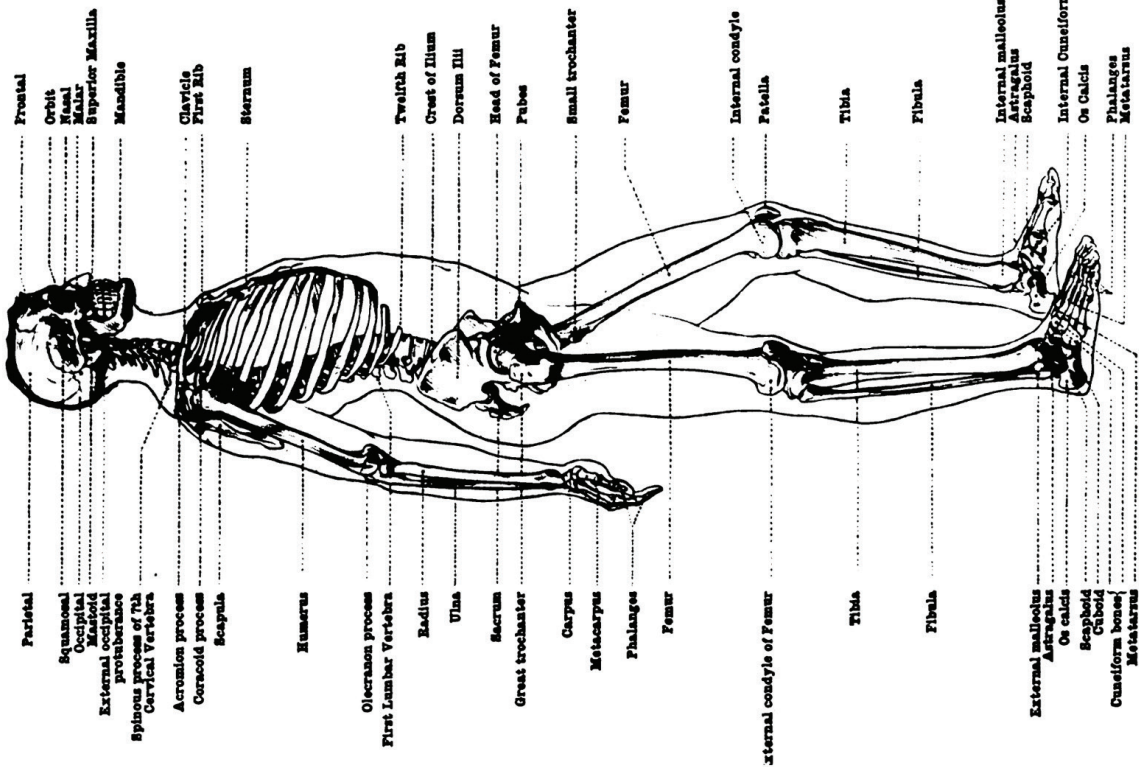
# SKELETAL SYSTEM (ADVANCED)



MEDIAL ASPECT OF THE LEFT HALF OF THE SKULL SAGITTALLY DIVIDED.

**Red :** parts of frontal, maxilla, and sphenoid. **Blue :** palatine ; nasal ; part of parietal.  
**Purple :** part of occipital squama. **Yellow :** part of basi-occiput.  
**Uncoloured :** left ala of vomer ; inferior concha ; ethmoid ; and other bones.

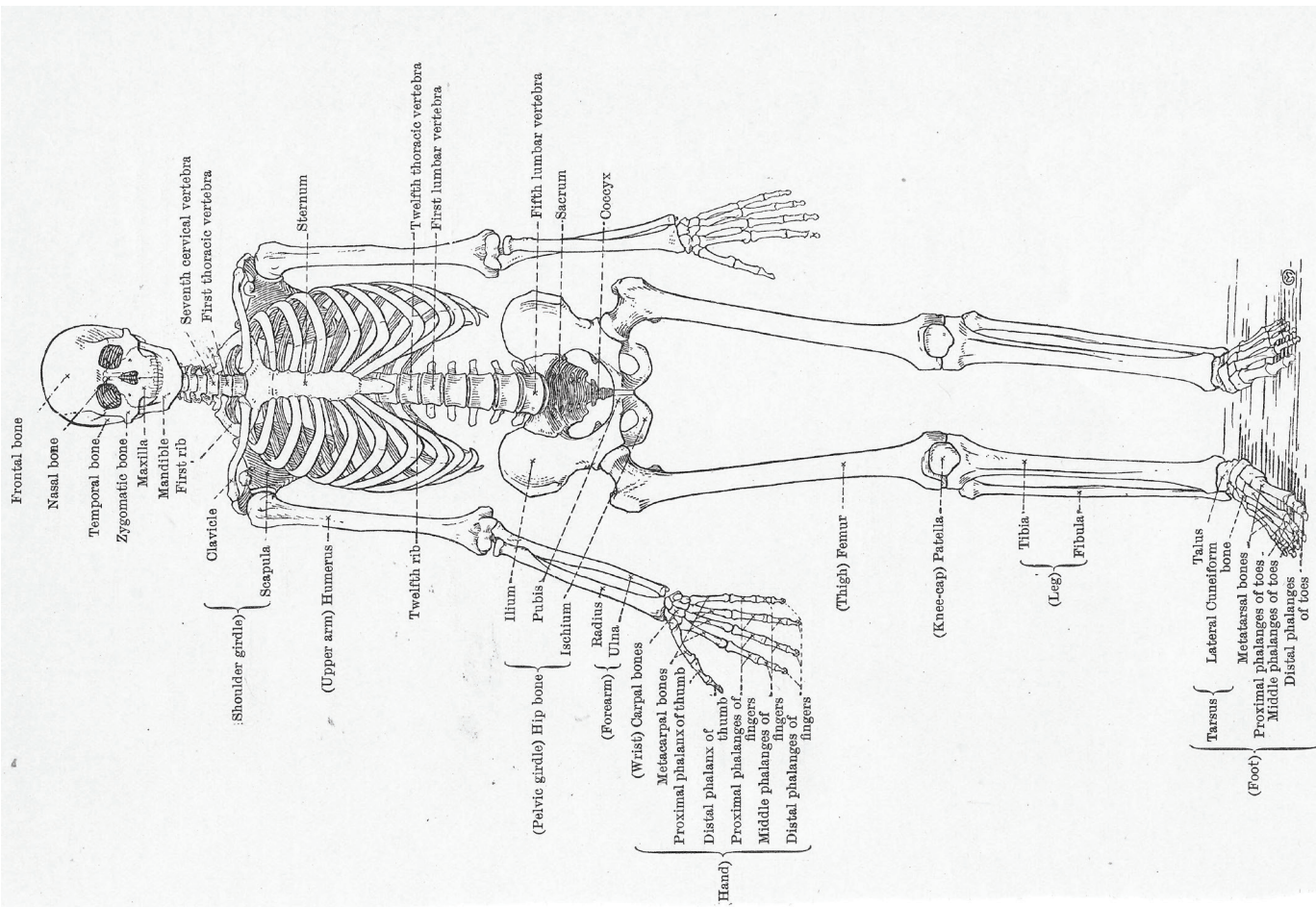
- |   |   |
|---|---|
| 1. Near nasal spine of frontal.             | 16. Spheno-palatine foramen.                        |
| 2. Nasal bone.                              | 17. Foramen formed by ossified pterygo-spinous lig. |
| 3. Frontal process of maxilla (and atrium). | 18. Styloid process.                                |
| 4. Lower part of middle meatus.             | 19. Spine of sphenoid.                              |
| 5. Near opening of maxillary sinus.         | 20. Mastoid process.                                |
| 6. Inferior concha.                         | 21. Basion.   |
| 7. Inferior meatus.                         | 22. Internal auditory meatus.                       |
| 8. Anterior nasal spine.                    | 23. Anterior condylar canal.                        |
| 9. Incisive fossa and canal.                | 24. Groove for inferior petrosal sinus.             |
| 10. Palatine process of maxilla.            | 25. Opisthion.                                      |
| 11. Horizontal plate of palatine.           | 26. Sigmoid groove.                                 |
| 12. Posterior nasal spine.                  | 27. Opening of mastoid foramen.                     |
| 13. Hamulus of medial pterygoid plate.      | 28. Transverse groove.                              |
| 14. Lateral pterygoid plate.                | 29. Cerebellar fossa.                               |
| 15. Superior meatus.                        | 30. Internal occipital protuberance.                |



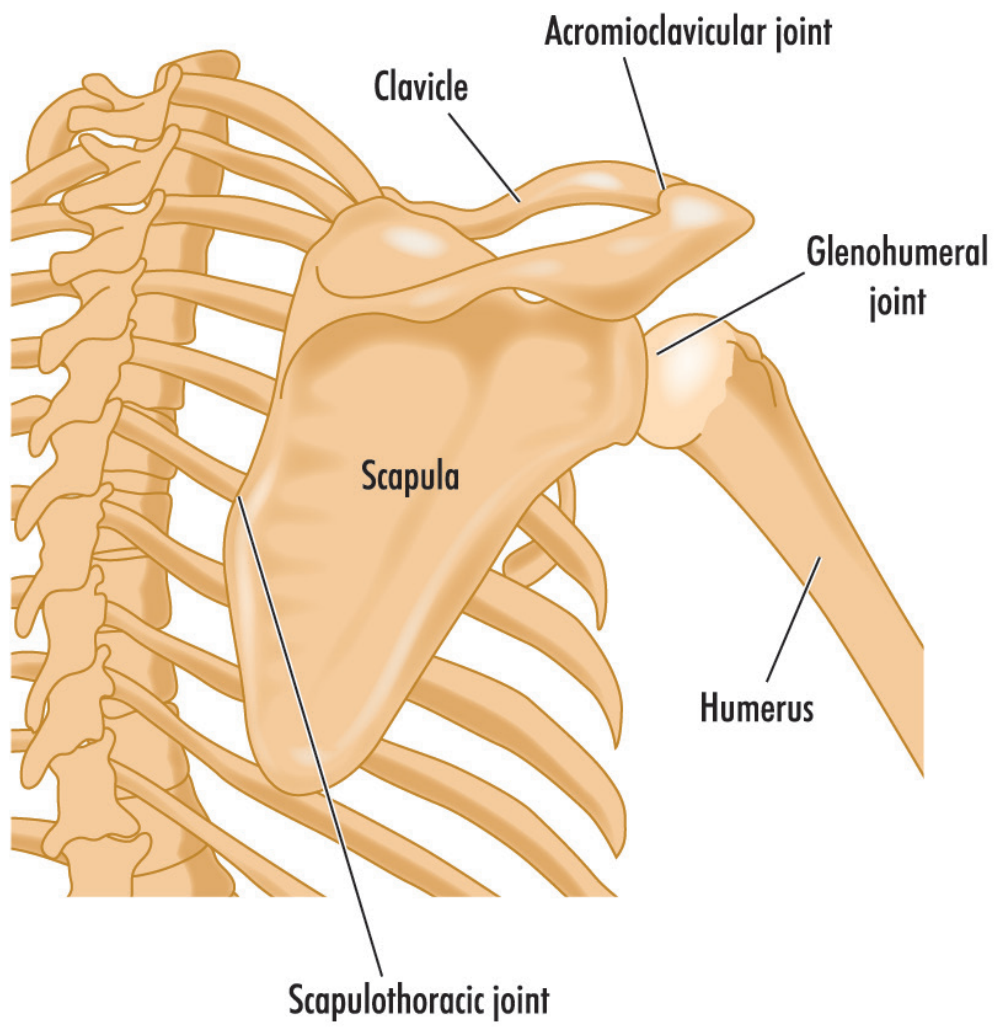
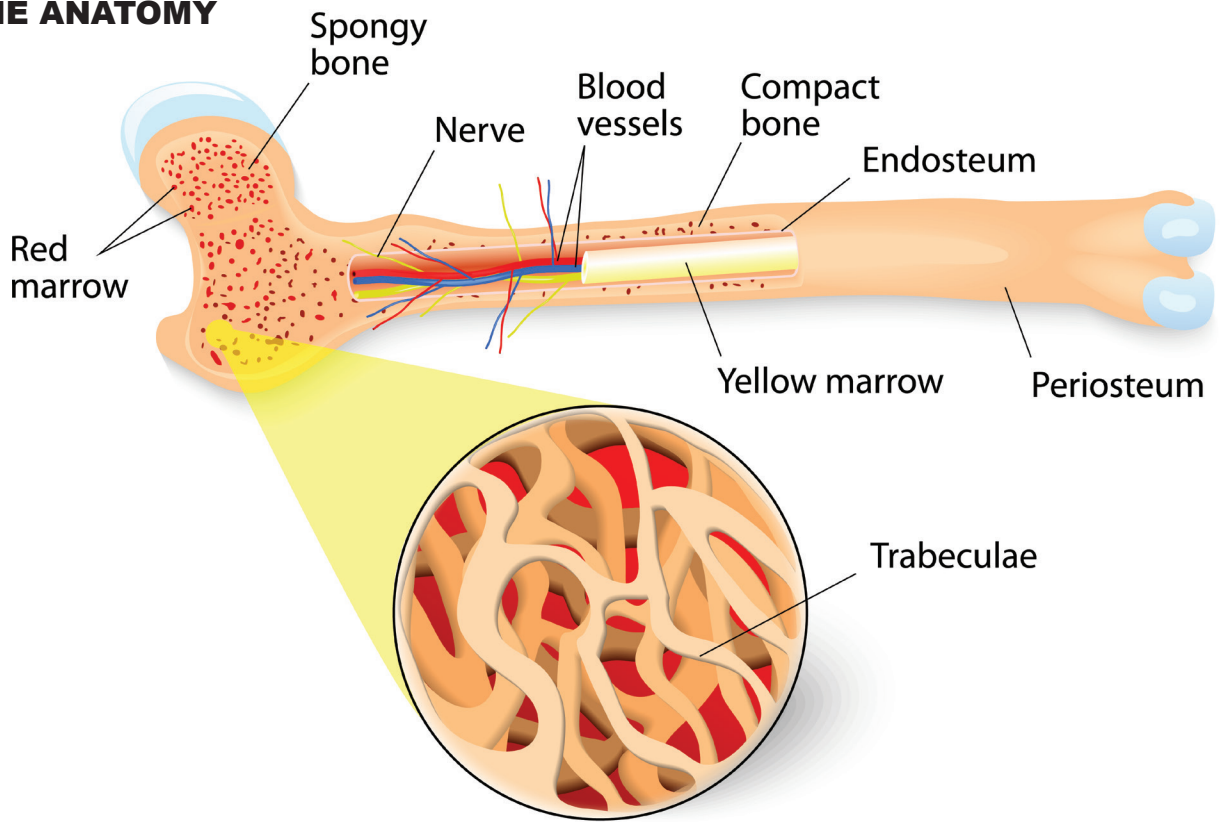
**PLATE IV.—LATERAL VIEW OF MALE SKELETON**

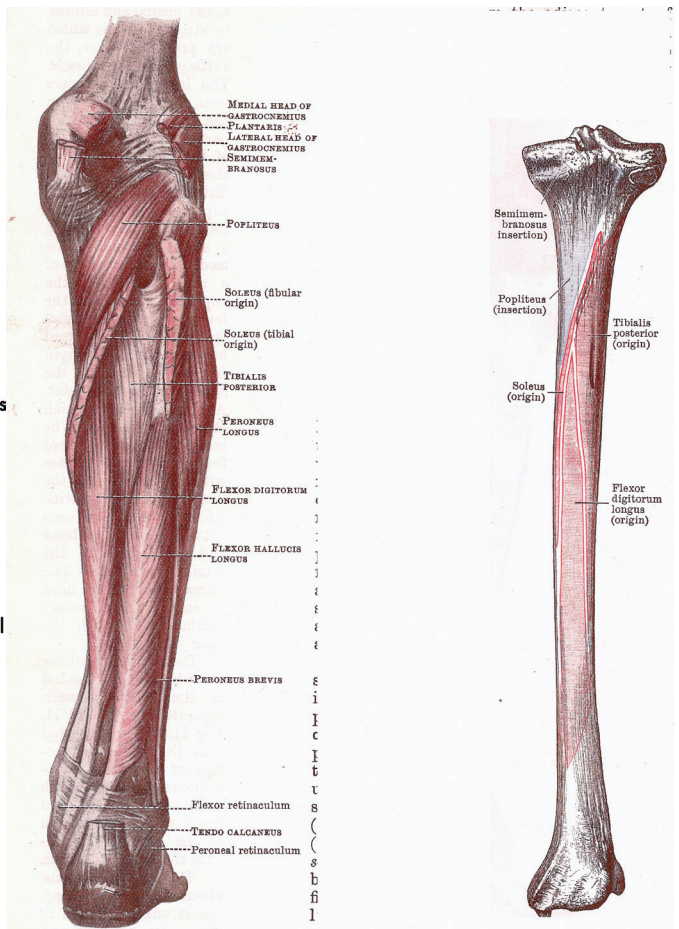
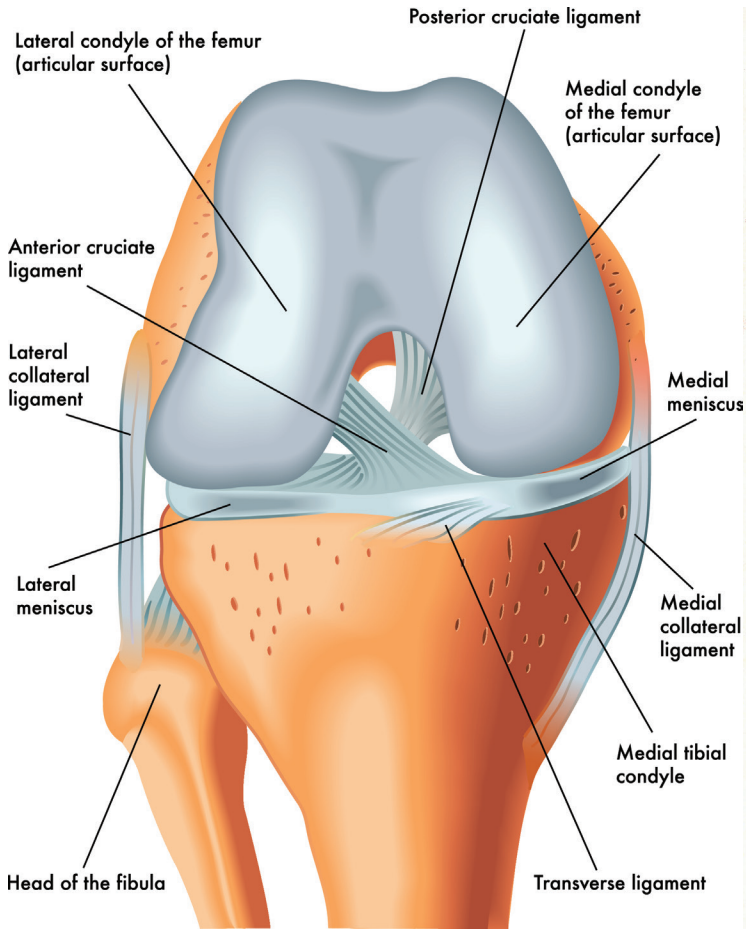
**PLATE III.—BACK VIEW OF MALE SKELETON**

Right Forearm Pronated; Left Forearm Supinated

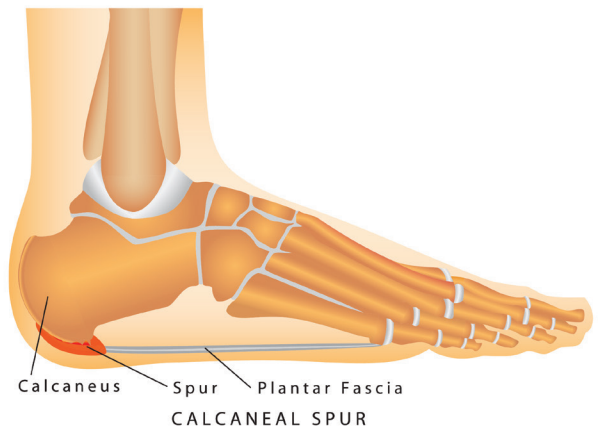
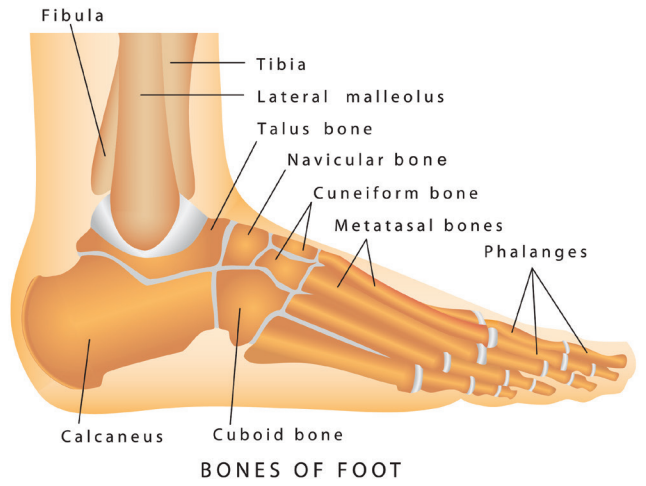
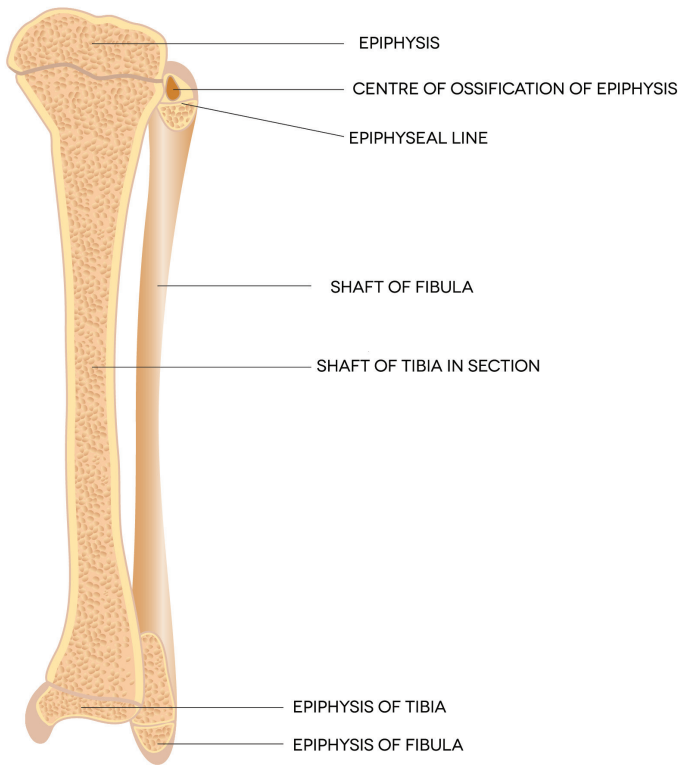


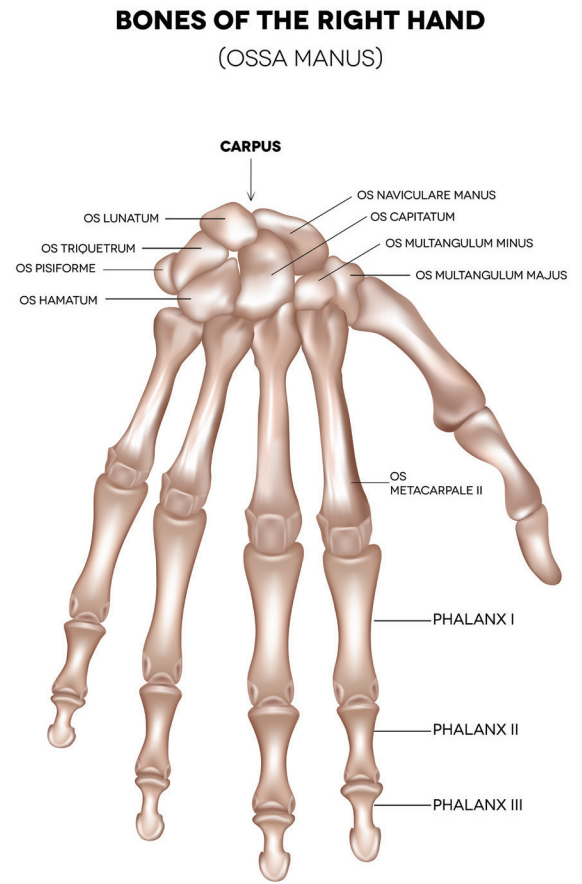
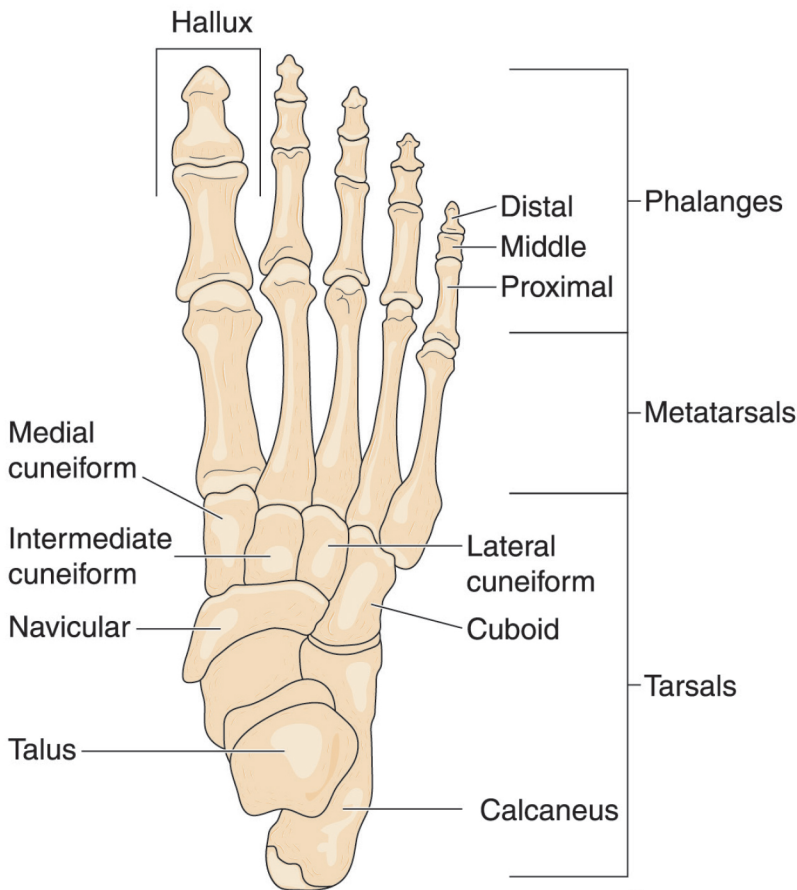
# BONE ANATOMY





TIBIA AND FIBULA IN SECTION





## Types of Bone Fractures

